

*"It's more blessed to give than to receive." Acts 20:35*

## SOME "GIVERS" WHO'VE BLESSED NAAMAN CENTER



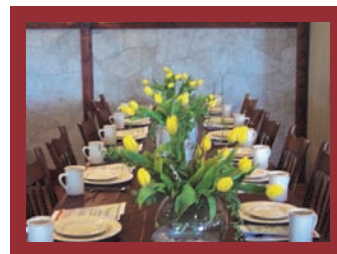
← Mt. Calvary middle school students came to Naaman Center for a "Serv-a-thon"—2 1/2 hours of pulling weeds and mowing. They did an outstanding job.



Samantha Sallade, our wonderful Elizabethtown High School intern! ↑

Mary Lou Ruegg, Carolyn Hilbert, and Anna Peachey coordinate many things behind the scenes for the spring banquet at Hershey Farm Restaurant.

Rhoda Carr provides the beautiful flower arrangements. ↓



Amanda Krodel cleaned our sign and recruited sponsors for the Golf Tournament.

Roy Sauder and his employees mow the grass and remove the snow, much appreciated services. →



Phone: 717-367-9115  
 Fax: 717-367-9759  
 E-mail: naaman@naamancenter.com  
 www.naamancenter.com  
 Naaman Center Newsletter is printed several times a year.  
 Editor: Ruth K Martin  
 595 Old Hershey Road  
 Elizabethtown, PA. 17022  
 The Naaman Center,  
 4600 E. Harrisburg Pike,  
 Elizabethtown, PA 17022  
 is a non-profit 501(c) 3  
 Christian outpatient  
 drug and alcohol  
 treatment center  
 for adolescents and adults.

4600 East Harrisburg Pike  
 Elizabethtown, PA 17022




# Naaman Center Newsletter

*Excellence in drug and alcohol treatment with a Christian perspective*

## NAAMAN CENTER CLINICAL STAFF EXPANDS



*Front row (left to right)*  
 Frank Heron, MS, clinical supervisor (Quarryville office); E. Daniel Martin, MD, medical director; Steve Schedler, MSW, clinical director.

*Middle row:*  
 June Christenson, MS, therapist; Gene Eerickson, MSW, therapist (Gap office); Samuel Mwangi, BS, counselor; Tina Tatnall, BA, counselor.

*Back row:*  
 Ted Dickerson, MSW, therapist; Ed Martin, BSW, counselor. *Not pictured:* Teresa Cote, LPC, CCDP, NCC.

In the last two years, because of the growing need for services, the clinical staff for the Naaman Center has doubled and now includes 10 persons. Although some of these persons only work part time, each one contributes significantly to the caring Christian atmosphere at the Naaman Center. In addition to the main office at 4600 East Harrisburg Pike, Elizabethtown, Naaman Center offers services at two satellite offices, one at 835 Houston Run Drive, Suite 230, Gap, PA and one at 2480-A Maple Avenue, Quarryville, PA.

## Office Staff at Elizabethtown Office



Left to right, **Jacki Smith**, Business Office Support, **Jenna Hanson**, Administrative Assistant II; **Ann Myers**, Administrative Assistant I; **Sheila Hunter**, Office Manager/Accounting Associate

### Important Announcements

- July 15<sup>th</sup> is Naaman Center's annual golf tournament at Par Line Golf Course. Call 367-9115 to sign up. Great prizes and good fun.
- Spring banquet donations topped \$9,000. Thank you!
- \$105,000 is needed for the Capital Stewardship Fund to cover costs for the addition. Please put Capital Stewardship Fund on the memo line of your check.

*One plants, another waters, but God gives the increase! 1 Cor. 3:6*

NON-PROFIT ORG.  
 U.S. POSTAGE  
 Paid  
 ELIZABETHTOWN, PA 17022  
 PERMIT NO. 15

**From the Executive Director:**



In my devotions this morning, I thanked God for His blessings upon my life, my family and friends, and upon the ministry at Naaman Center. What a privilege it is to serve a God who loves and cares deeply about each one of us! Life is very unpredictable, yet God is the source of our strength and walks with us each step of the way.

At Naaman Center, we watch God's love transforming lives from the inside out.

"The person who is forgiven only a little will love only a little." Luke 7:47. We can replace the word "forgiven" with "accepted" and maintain the integrity of the passage. "He who is 'accepted' little loves little." If we think God is harsh and unfair, guess how we'll treat people—harshly and unfairly. But if we discover that God has doused us with unconditional love, would that make a difference?

The apostle Paul would say so! Talk about a turnaround. He went from bully to teddy bear. Paul (before Christ) sizzled with anger. He "made havoc of the church" (Acts 8:3 NKJV). Paul after his conversion brimmed with love.

His accusers beat him, stoned him, jailed him, mocked him. But can you find one occasion where he responded in kind? This is a different man. His anger is gone. His passion is strong. His devotion is unquestioned. But rash outbursts of anger? A thing of the past.

What made the difference? He encountered Christ. Naaman Center provides a place of hope and healing through a Christ-centered outpatient drug and alcohol treatment facility.

"Do not despise...small beginnings, for the Lord rejoices to see the work begin." Zechariah 4:10 NLT. Against a towering giant, a brook pebble seems futile. But God used it to topple Goliath. Compared to the tithes of the wealthy, a widow's coins seem puny. But Jesus used them to inspire us. Moses had a staff; David had a sling; Samson had a jawbone; Mary had some ointment; Dorcas had a needle—all were used by God! God inhabits the tiny seed, empowers the tiny deed. Don't discount the smallness of your deeds.

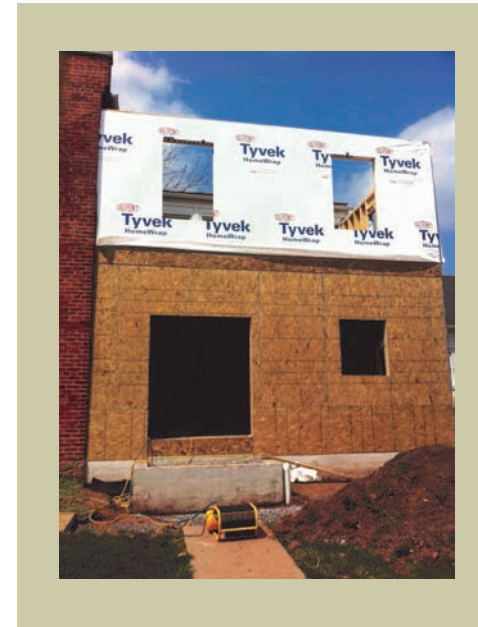
Due to limited space and the great need in our communities, we moved forward last winter to begin the process of adding an addition to the existing building in Elizabethtown. The project is now officially completed. Praise the Lord! This was a walk of faith. The continued help of local churches, businesses and individual supporters with our Capital Campaign (goal \$125,000.00) will allow us to meet the financial needs of this project. So far we have received just over \$20,000.00 towards that goal.

May God bless each of you as you lift Naaman Center up in your prayers and, as God leads, offer financial support. "What a difference you and the Naaman Center are making!"

*Patricia Frank*

**MAIN OFFICE AT 5600 HARRISBURG PIKE EXPANDS !**

The foundation and crawlspace prepared, the workmen begin dismantling the former entrance and enclosed balcony, a process that revealed the poor condition of the exterior wood and underscored the wisdom of tearing this down and making the addition here.



The addition takes shape.

The addition is finished in record time and ready for business.

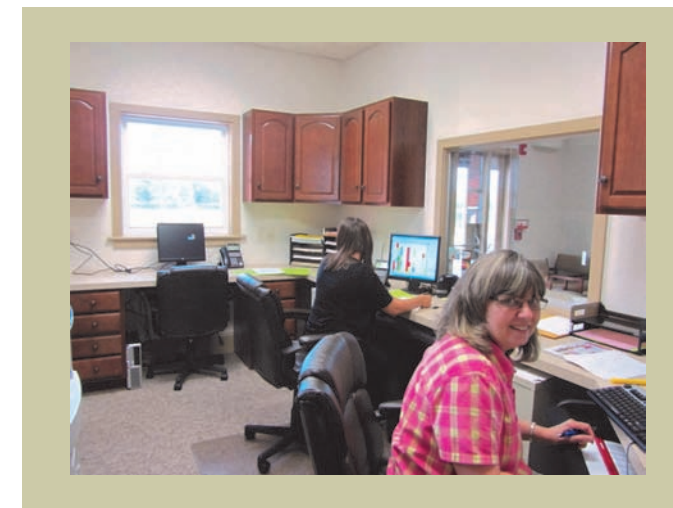


Tina Tatnall is planning a serenity flower garden in the area between the walkway and the brick shed.

**Just take a look inside!**



Inviting check-in, check-out area; spacious waiting area



Quiet work stations arranged for efficiency!



Two pleasant offices upstairs!

*Easy, delicious summer time treat!*

**Banana Split Ice Cream Dessert**



Melt **1 stick of butter**. Mix melted butter with **2 cups of finely crushed graham crackers**. Set aside 1/2 cup of this mixture. Press remaining amount evenly into a 9 x 13 inch pan. Slice **2 or 3 bananas** and distribute slices more or less evenly over the

graham cracker layer. Slice **1/2 gallon of Neapolitan or vanilla ice cream** and make an ice cream layer over the banana pieces. Cover and freeze. Make a chocolate sauce by stirring together over low heat: **1 cup of chocolate bits, 2 cups powdered sugar (10X), 1 teaspoon vanilla flavoring, 1 can evaporated milk (12 oz.)**.

Cook until slightly thickened or soft ball stage. (The sauce softly holds a shape in cold water.) Cool sauce to room temperature. To serve, cut frozen squares from 9 x 13 pan. Top each with chocolate sauce, **whipped topping, chopped nuts (optional)** and reserved crumbs. Delicious dessert for 15 persons!